



*The fire in your ATV*

## VDI Live Tuner



The Live Tuner is the most advanced engine tuning device available. In addition of allowing fuel and timing adjustments in real time, it also has the ability to log the actual EFI parameters used at the same time as the ECU is using them. This data can also be logged in conjunction with two analog inputs (O<sub>2</sub>, EGT, etc.) for ease of tuning. When used in conjunction with our free CopperheadEFI application, you have access to the most comprehensive tuning and diagnostic setup available today.

Telephone: (403) 668-7470  
Facsimile: (403) 668-7471  
Webpage: [www.velocitydevices.com](http://www.velocitydevices.com)  
Email: [sales@velocitydevices.com](mailto:sales@velocitydevices.com)



*The fire in your ATV*

## **Remote Access Functions**

- Upgrade maps in seconds.
- Firmware upgrades in approximately 30 seconds.
- Stores one map and one firmware file to allow updates without a computer at the machine.
- Reports ECU machine type as well as loaded firmware version.
- Reports current error codes in the ECU.
- Logs EFI data as well as two 0-5 Volt analog inputs (O<sub>2</sub>, EGT, etc.) to internal storage.
- Logged data is synchronized to the ECU operation to allow for easy map adjustments.
- Two storage modes. Standard and extended diagnostic mode.
- Stores approximately an hour of logged data during normal riding (storage dependant on log detail as well as engine RPM).
- Logging, firmware and map updates can be initiated via the pushbutton on the device.
- Log data can be downloaded and played back using the CopperheadEFI application.
- Log utilization shown in a convenient graphical bar on the CopperheadEFI application.
- Log data can be exported to CSV format to be displayed in spreadsheets like Excel.
- Live Tuner firmware upgrades via the CopperheadEFI application.

Telephone: (403) 668-7470

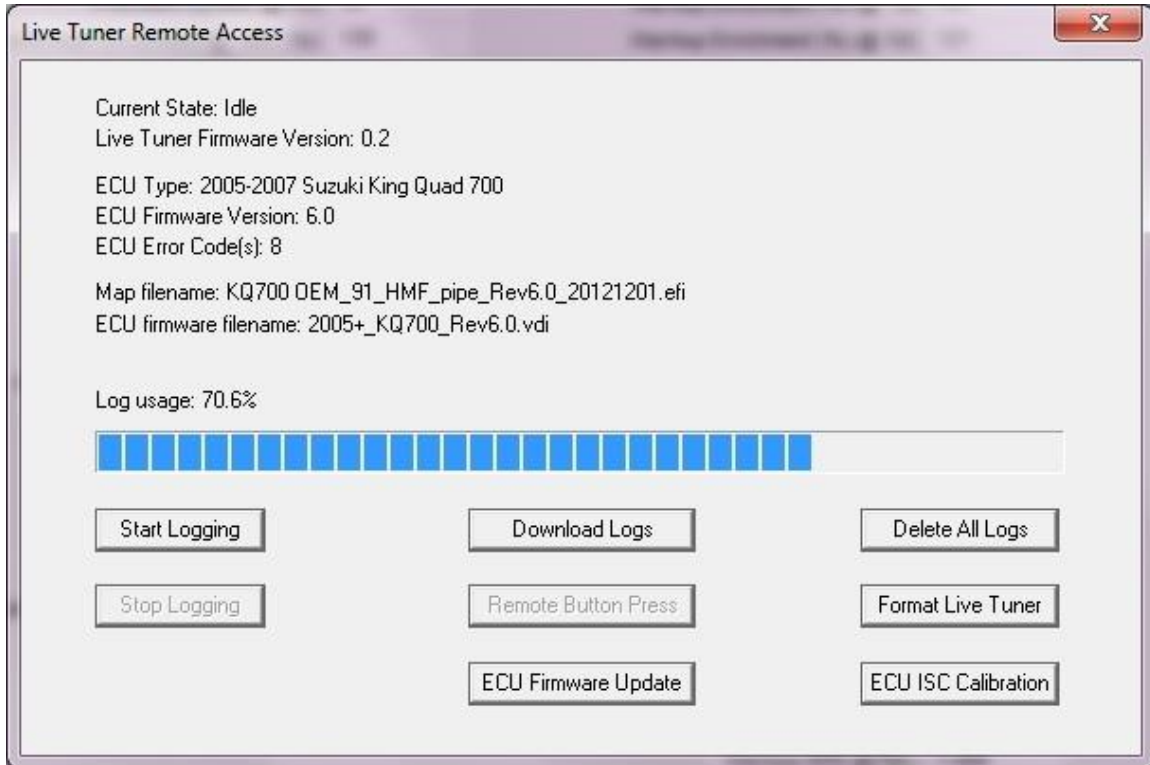
Facsimile: (403) 668-7471

Webpage: [www.velocitydevices.com](http://www.velocitydevices.com)

Email: [sales@velocitydevices.com](mailto:sales@velocitydevices.com)



*The fire in your ATV*



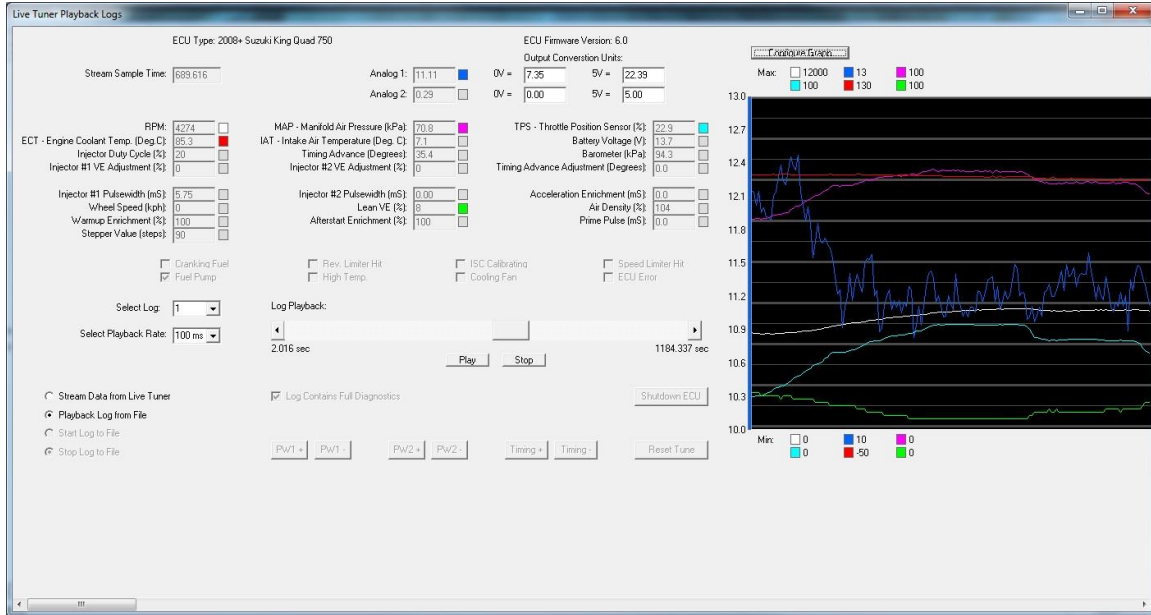
## Live Tune / Playback

- Logs can be replayed based on their recording number.
- Adjustable playback rate.
- Up to 6 parameters can be graphed at a time, either from the live data or from the playback log.
- In Live Tune mode, EFI data is displayed real time and can be logged to disk for playback at a later time.
- Timing and injector pulse widths can be modified in real time to allow for easy tuning.
- Diagnostic level can be changed from normal mode (critical EFI parameters) to full detail mode (all EFI data) to balance detail versus log usage.
- Machine type and firmware version are stored in each log recording to allow multiple machines to be stored in the Live Tuner at one time.

Telephone: (403) 668-7470  
Facsimile: (403) 668-7471  
Webpage: [www.velocitydevices.com](http://www.velocitydevices.com)  
Email: [sales@velocitydevices.com](mailto:sales@velocitydevices.com)

# Velocity Devices Inc.

The fire in your ATV



- Supports flexible graphing options.

Telephone: (403) 668-7470  
 Facsimile: (403) 668-7471  
 Webpage: [www.velocitydevices.com](http://www.velocitydevices.com)  
 Email: [sales@velocitydevices.com](mailto:sales@velocitydevices.com)